



# *Wazzu Racing*



WASHINGTON STATE UNIVERSITY

**Voiland College of  
Engineering and Architecture**



## Formula SAE

Formula SAE is a collegiate design competition organized by the Society of Automotive Engineers. The competition is based on a formula race car with which students are granted the opportunity to design, build, and compete on an international playing field. By competing, students are challenged with applying classroom knowledge to real world problems that bolster their ability to communicate and work in teams. Leadership roles in the team further demand an ever-improving capacity to manage projects and leadership to succeed.



## Wazzu Racing

Wazzu Racing is the Formula Society of Automotive Engineers (SAE) team at Washington State University. We pride ourselves on our ability to provide drastic and continuous improvements to our car year after year. Since 2023, we have improved our score by 280 points and moved up 58 places in the Formula SAE Competition in Brooklyn, Michigan.

## Our Members

Wazzu Racing is made up of more than 50 students of diverse backgrounds and experiences joined together by a passion for motorsports. Business, engineering, communication, and several other disciplines contribute significant roles on the team. Members are encouraged to branch out and take on multifaceted projects that cover a wide range of skills and expose them to new ideas.





## Our Story

The 2025-2026 Formula SAE season will mark Wazzu Racing's 20th year as a team. In the 90's, we began as a Baja team in the Baja SAE competition but moved to Formula in 2005. Each year, our team grows in membership, knowledge, and experience, all contributing to a consistently improved competition vehicle. This year, we plan to continue our momentum and place into the top 40 teams at the 2026 Competition in Brooklyn, Michigan.

## Our Values

Teamwork, resilience, and precision is at the core of our team's beliefs. Our members are here because they want to challenge and grow their knowledge into a real world application. Learning how to properly envision, design, and manufacture high performance racing components is just a small part of our scope. We teach students how to work cohesively as a team and how to bounce back from any setback in our way.



## Our Development

Formula SAE strengthens technical and soft skills, producing more competent engineering graduates. This comes from the opportunities to practice concepts learned in class with real-world, hands-on applications. By attending the competition, students are able to gain exposure to judges and representatives from a variety of industry leaders, as well as network with these individuals.

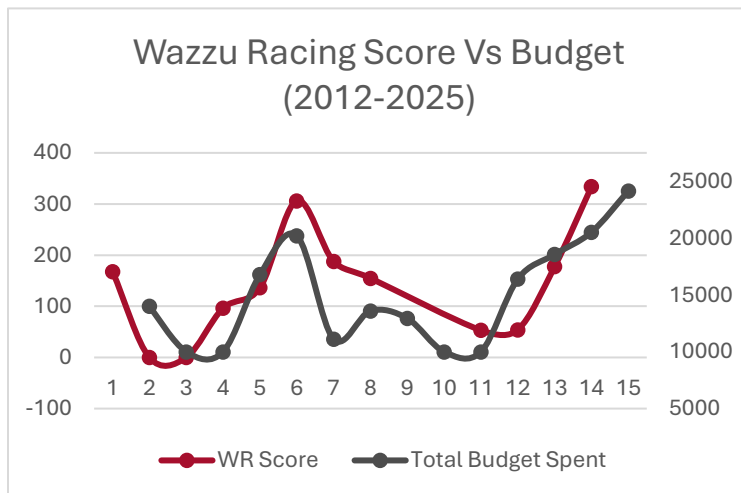




## Why we need sponsors

Formula SAE, and motorsports overall come with an inherent cost. As teams put more money towards their car, this yields a higher performance. Some teams spend as much as \$250,000 on their car every year. Since 2023, we have increased our budget by about \$10,000 and that money has translated into a 58 place and 280 point increase for our team. If we are wanting to keep up the momentum of the past few years, we are going to require more funding so that we can continue to make these improvements.

Category	Cost
Cockpit Controls, Brakes, Safety	\$6,000
Axles, Differential, Hubs	\$7,000
Engine and Headers	\$3,200
Suspension, Wheels, Tires	\$8,300
Chassis, Ergonomics	\$2,900
Carbon Fiber, Aerodynamics	\$2,500
Wiring, Electronics, Harness	\$3,000
Data Acquisition, Testing	\$4,500
Competition, Travel	\$12,000
Car Total	\$37,400
<b>Overall Cost</b>	<b>\$49,500</b>



## Effects of Sponsorship

As you can see from the chart to the left, there is a direct correlation between dollars spent and points earned at competition. This means that every dollar spent by our team correlates directly to a well thought out and justified decision that makes the most effective possible use of funds. This careful and thoughtful approach to our spending means that no donation to Wazzu Racing goes to waste.

## Ways to sponsor Wazzu Racing

A sponsorship for our club does not have to be a monetary donation. We will also happily accept parts and components, services (Such as machining, waterjet, server hosting, design reviews, etc.), discounts, travel and housing accommodations for competition, and any other form of sponsorship you could think of offering.



## The Benefit

By donating to Wazzu Racing, our sponsors are granted a unique opportunity to connect with WSU's most talented and driven students. Connections formed in the spirit of competition often extend past the program and graduation. By investing in our growth, you are also focusing on your company's growth by being able to shift your focus from recruitment to building your business.



## Exposure

Sponsors will also have their company logos placed on the race vehicle and team apparel. This leads to company exposure whenever the vehicle is at outreach, race, and corporate events. Wazzu Racing is a community that helps to promote your own business, while also giving students the opportunity to excel. All donations are tax deductible!



## What you receive in return

Should you or your company be kind enough to sponsor Wazzu Racing, you will have a variety of different opportunities available to you. Below is a list of different ways you can be thanked for a donation. If there's something that really appeals to you or you have a specific request, please reach out and ask.

### **Crimson Package – (\$4000+ or equivalent in products or services)**

- Logos of your choice on this year's car and/or apparel
- Personal shop tour
- Product display at competition with banner
- Other benefits upon request
- All items from lower tiers

### **Gold Package – (\$2500 or equivalent in products or services)**

- Featured on team media with special recognition
- Large logo on this year's car
- Wazzu Racing Banner
- All items from lower tiers

### **Silver Package – (\$1500 or equivalent in products or services)**

- Specific social media post about your company
- Medium logo on this year's car
- 3D-printed model of this year's car
- All items from lower tiers

### **Bronze Package – (\$1000 or equivalent in products or services)**

- Small logo or name on this year's car
- Wazzu racing hat and T-shirt
- All items from personal donation tier

### **Personal Donation – (Under \$1000 or equivalent in products or services)**

- Thank you letter
- Newsletter with updates on the current design and manufacturing of this year's car





## How to donate?

For online donations and donation info: [WSU Foundation Website](#)

For checks: Make payable to “WSU Foundation” with subject line “Formula SAE Student Club”.

For regular checks mail to:

Washington State University Foundation  
ATTN: Gift Accounting  
PO Box 641927  
Pullman, WA 99164-1927

Via courier (FedEx, UPS, etc.)

Washington State University Foundation  
ATTN: Gift Accounting  
255 E Main Street, Suite 201  
Pullman, WA 99164-1927  
(509) 335-6686

Email [wazzu.racing@wsu.edu](mailto:wazzu.racing@wsu.edu) for more information, discussing alternative ways to donate such as materials or services, or to discuss specific sponsorship requests or terms

All donations are tax deductible. The WSU Foundation is a 501(c)(3) not-for-profit organization. The taxpayer identification number is 91-1075542. All required receipts and forms required for tax filings should be issued by the WSU foundation after a gift is received. If you have any questions or concerns please feel free to reach out to us and we will do our best to help you with any questions.

